

RUPES[®]

KR2A

KR2A

- CONCEPT
- MAIN FEATURES
- EVOLUTION – KR2A
- IMPROVEMENTS
- ACCESSORIES
- WORK IN PROGRESS



CONCEPT



MARKETING CONCEPT

KR2 is a real **mobile workstation** to provide the user everything he needs for daily work. It's compact, simple to install and it can be easily moved around the working area!



DESCRIPTION

KR2A is a turbine unit designed inside a **complete working station**.

Reliability and performance are matched with a high level of personalization for multiple operations like sanding and polishing.

Power [kW / HP]	Electric supply [V]	Flow- rate [m3/h]	Max vacuum [mmH2O]	Noise [db(A)]	Filter surface [m2]	Weight [kg]
1,5 / 2	230	240	2200	65	1	115



SANDING LAYOUT



KR2A with **sanding** equipment.

Electric and pneumatic sanders can be connected to the unit with RUPES flexible suction hoses.

An integrated cabinet can be used for placing pads, tools and useful accessories. The perforated board equipped with all supports provides quickly all consumables to the user.

A wide worktable with ribbed rubber surface makes all daily work easy and fast.

SANDING AND POLISHING LAYOUT

KR2A **flexibility** and **personalization** are optimal to prepare the unit for both sanding and polishing operations. Abrasives and polishes can be placed in the best efficient way and position.

Tools, consumable, electricity, compressed air and vacuum in a single unit and place.



MAIN FEATURES



FRONTAL CONNECTIONS

KR2A is designed to support **2 users** at the same time with:

- 2 pneumatic connections for tools with auto start
- 1 electric plug for service tool (polisher)
- 1 electric plug for electric tools with auto start
- Y suction connection for 2 flexible hoses.



SIDE CHANNEL PUMP

A **1,5kW** power side channel pump is installed inside the unit.

Against simple mobile vacuum cleaner, the pump can work for more than **20.000 hours** without maintenance.



PTFE FILTER

A **1 [m²]** PTFE filter is installed inside the unit to block very thin dust particles (**99,9%** efficiency with **0,3 [μm]** dusts).

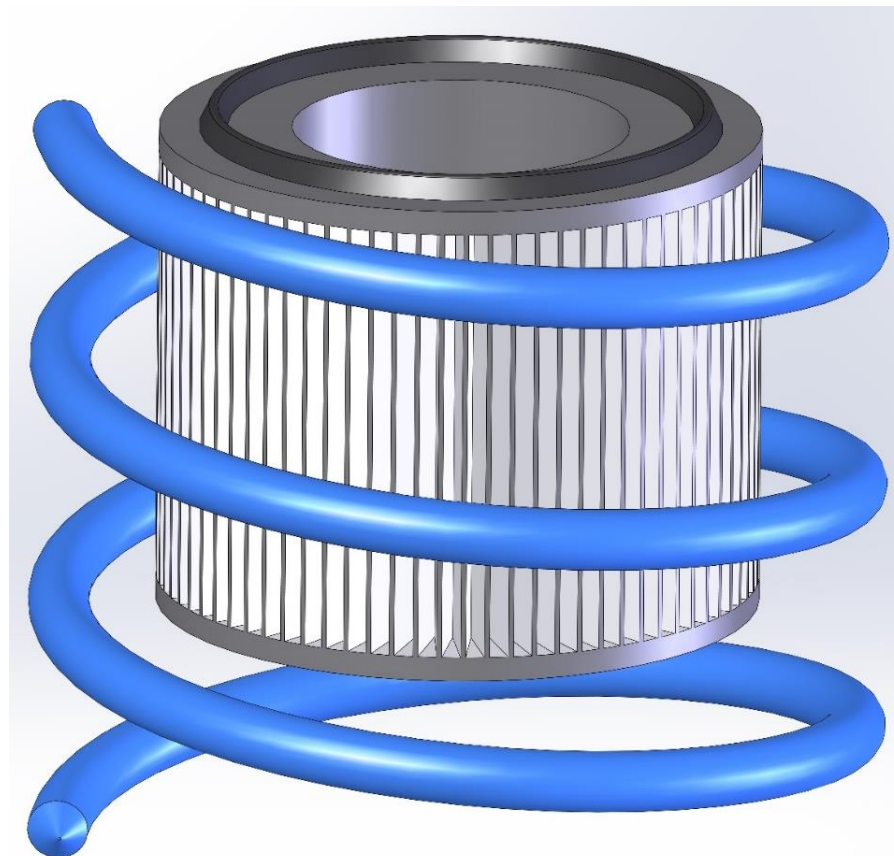
PTFE membrane **increases** filter **lifetime** also in industrial application with multiple kinds of dusts (dry, humid, metal, plastic, wood, etc.)



CYCLONIC FILTRATION SYSTEM

Around the filter a metal plate force the dust a cyclonic flow.

The dust flow speed is reduced, to create a natural filtration: dust falls inside the container because of its weight.



MAIN FEATURES

EASY DUST CONTAINER EXTRACTION

By opening the frontal panel, the dust container can be easily taken from the unit to remove dust.

One only hook is used to quickly and correctly fix the dust container .



LIFTING RAIL SYSTEM

A special **lifting rail system** makes ordinary maintenance fast and easy: dust container is easily extracted from the unit.

Empty the dust container is a fast and simple operation.

EASY FILTER REPLACEMENT

A PTFE filter cartridge is fixed with a single plastic knob.

Removing and replacing the filter is an **easy and quick** operation of extraordinary maintenance.



CONVEYED EXHAUST

Clean and filtered air is conveyed on the **exhaust**.

A metal connection on the back of the unit can be used to connect the exhaust outside the working area.



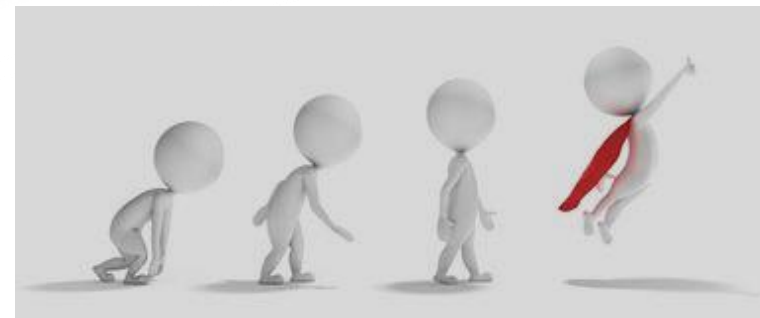
EASY AND SIMPLE INSTALLATION

Like a simple mobile **vacuum cleaner**, the unit needs only electricity (**230V**) and compressed air connection. The installation is quick and simple.



EVOLUTION

KR2A



TEST MADE

In 2 years we have made several, intensive stress tests on the Mobile Turbine KR2A.



FEEDBACKS

During these years:

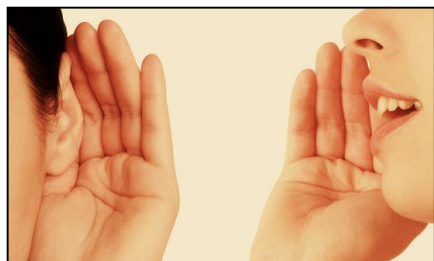
We've listened to you



We've developed
new ideas



KR2 concept has evolved



Thanks to your feedback

**THANK
YOU**

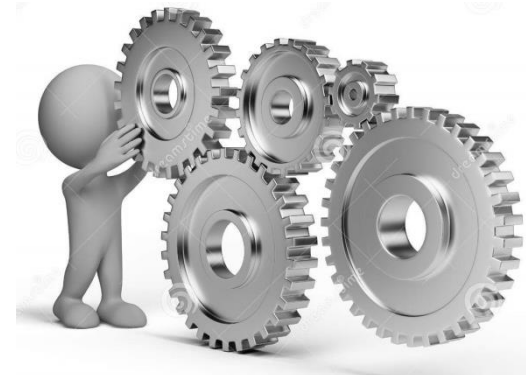
NEW KR2A

We have designed the new KR2A with:

- **New** Automatic Filter Cleaning System
- **New** High efficient Pump
- **New** Electronic Card
- **New** Cooling System
- **New** Improved safety and protection
- **New** Fleece Dust Bag



IMPROVEMENTS



HIGH EFFICIENT PUMP

Technical improvements on the pump:

1. High Energy Saving
2. Integrated soft start



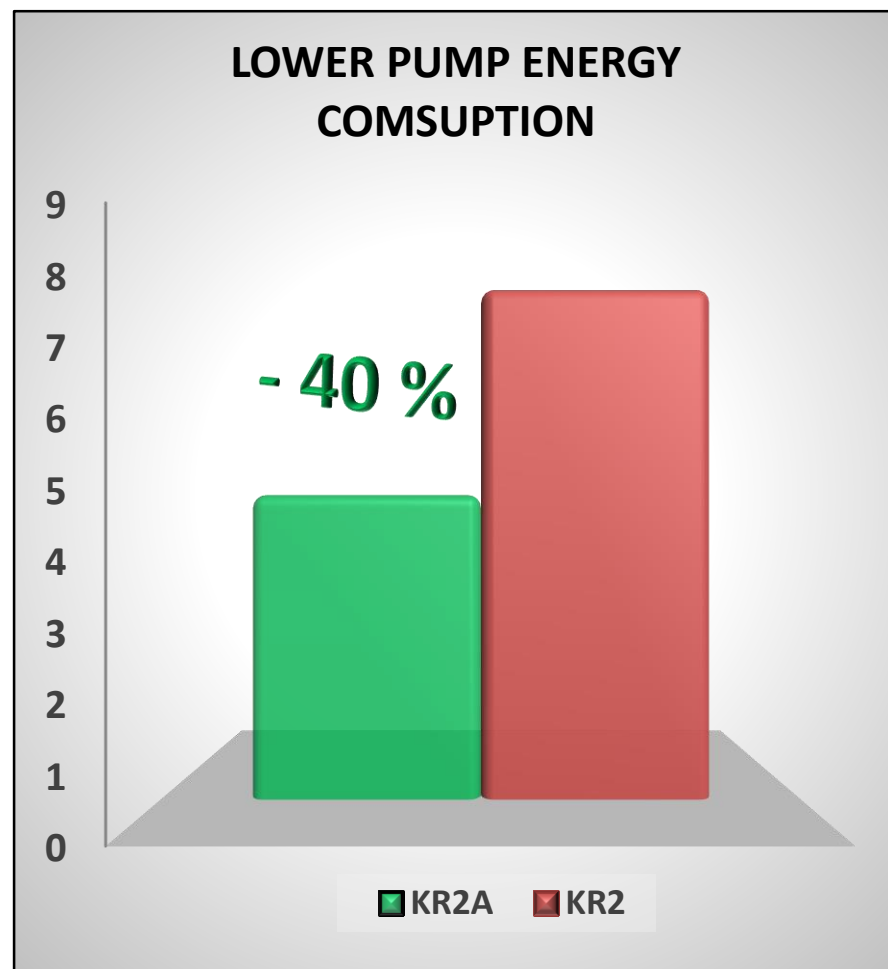
HIGH EFFICIENT PUMP

Less current consumption during the work

- 40 %

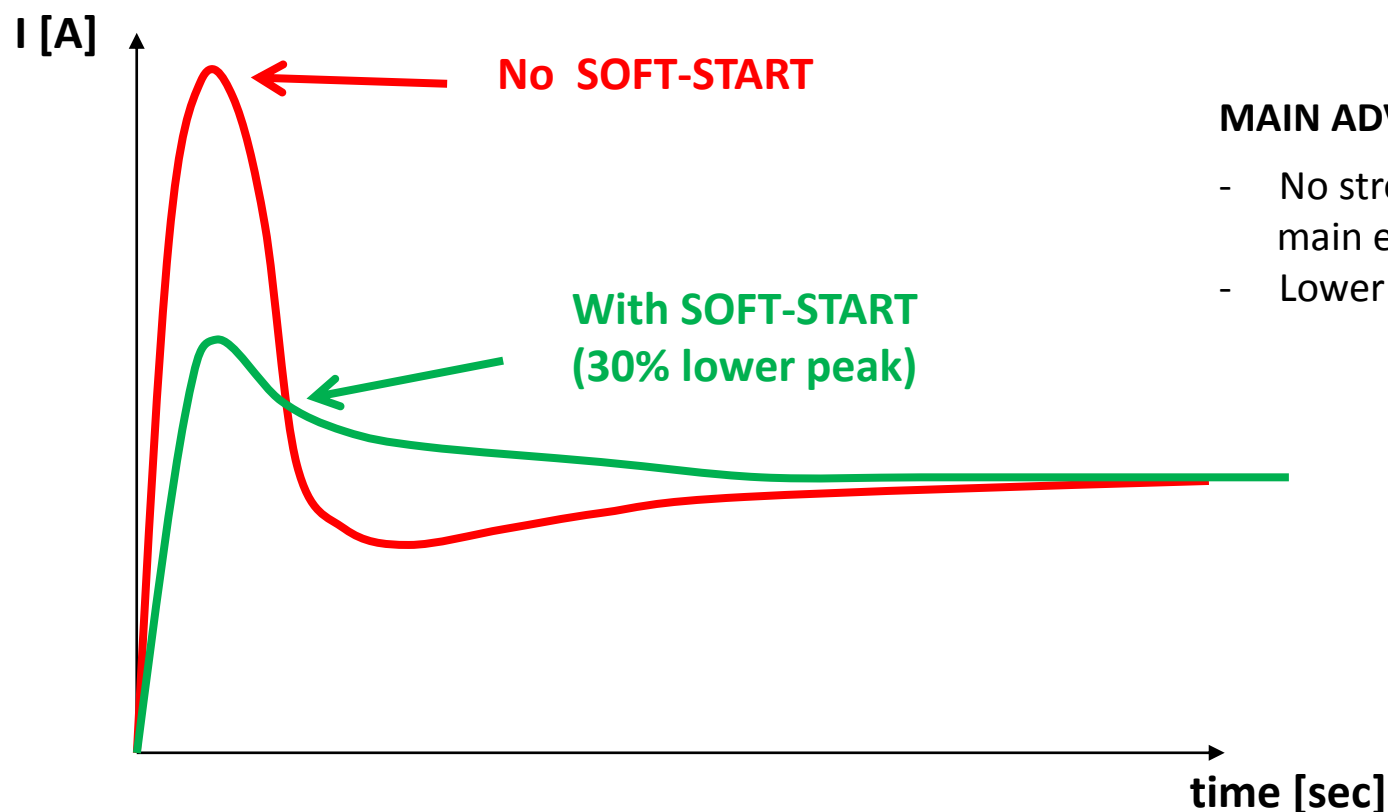
Thanks to this upgrade:

- Less stress on pump
- Less maintenance cost
- Higher life



HIGH EFFICIENT PUMP

Soft Start System introduced to reduce peak of current during the start up of the suction unit.



MAIN ADVANTAGES:

- No stress on the main electric supply line
- Lower consumption



ELECTRONIC CARD

New electronic board and new software installed that can control more functions, as:

- The automatic filter cleaning
- Temperature of the unit during the work-time
- New vacuum control touch panel
- More flexible to update for the future evolution

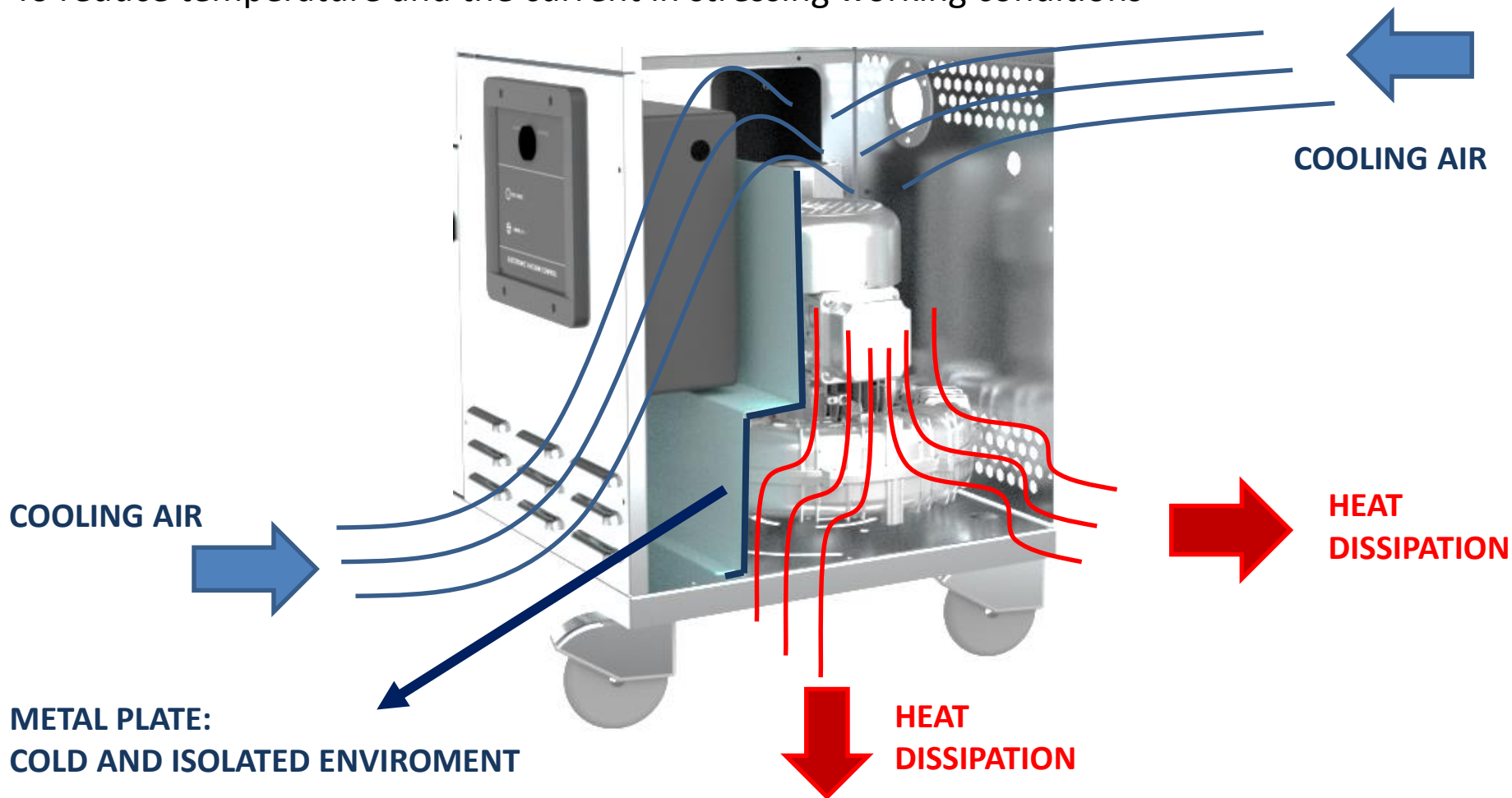
RUPES KR2A

NEW ELECTRONIC CARD



COOLING SYSTEM

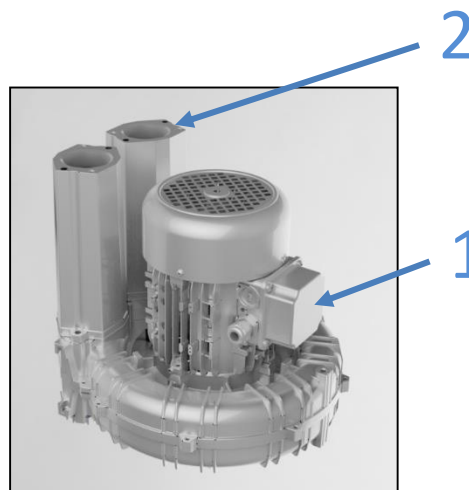
To reduce temperature and the current in stressing working conditions



SAFETY AND PROTECTION

Safety protection increased, thanks to:

1. Temperature sensor
2. Safety vacuum valve



Thanks to these upgrades:

- Less stress on the main electric supply line
- No overheating
- High reliability



FLEECE DUST BAG

New polypropylene bag to collect and to dispose dust, according to the safety rules. It's composed of **3 layers**. This technique makes the bag more resistant and durable.

Strengths:

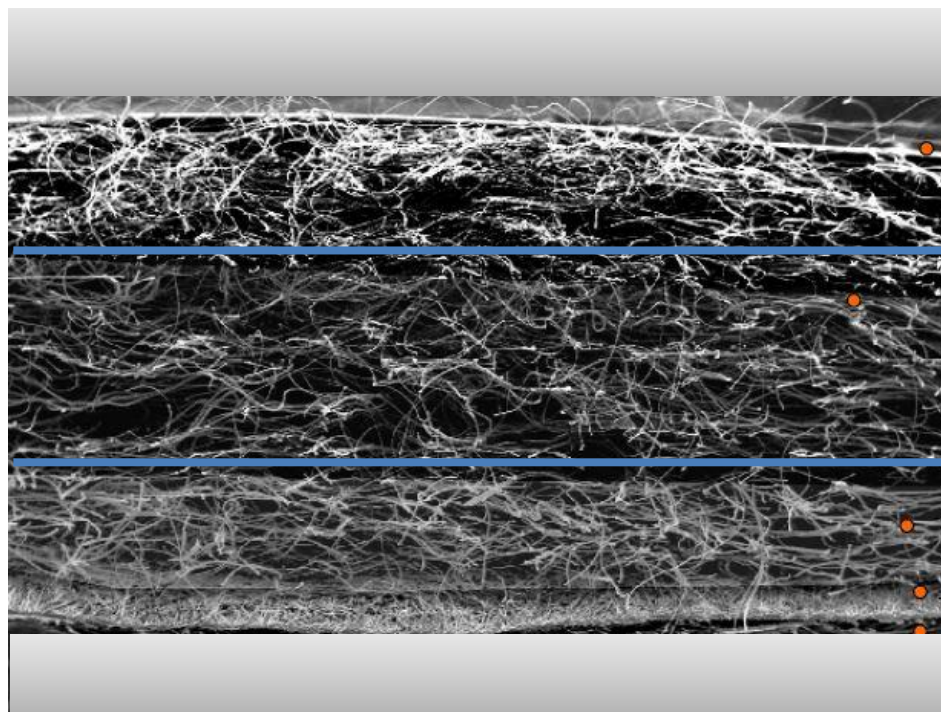
- Easy installation
- Easy disposal
- High resistance
- Simple placement



3

2

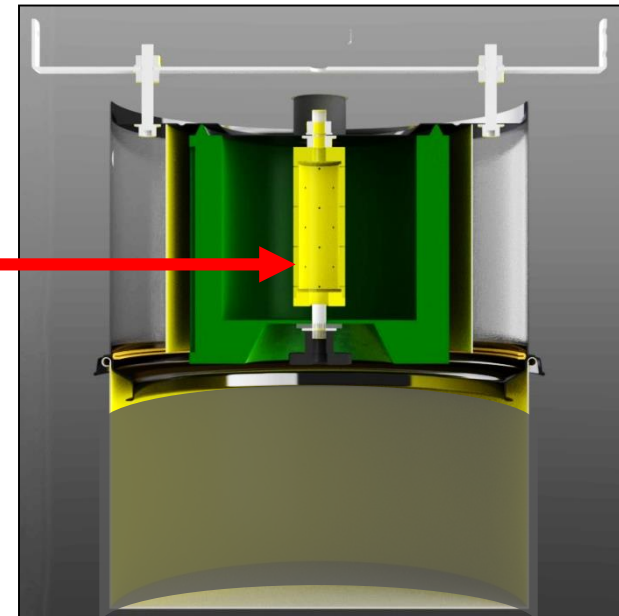
1



AUTOMATIC FILTER CLEANING SYSTEM

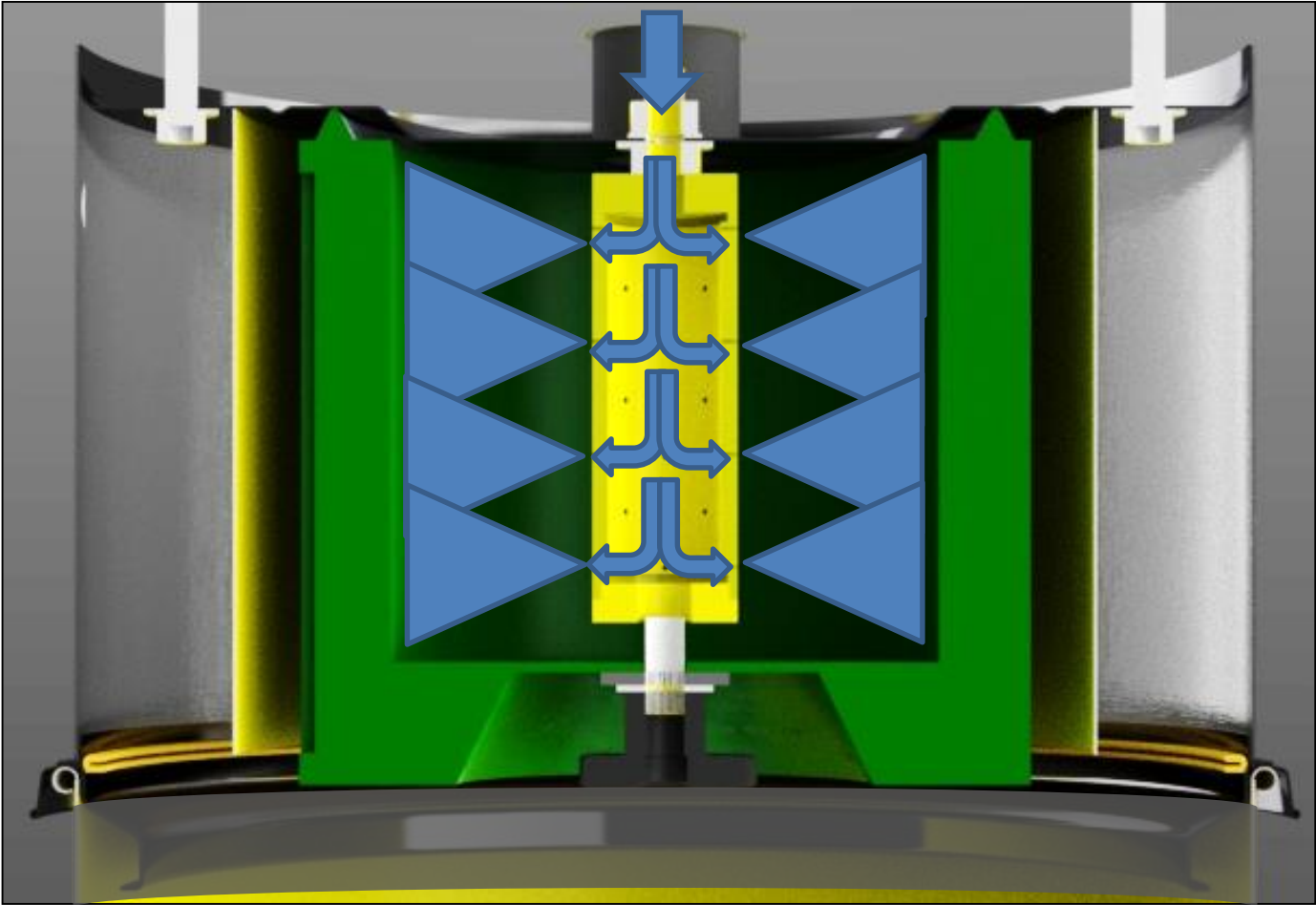
Features:

- Powerful Compressed Air Jets
- High Lifetime
- Low Weight (aluminium)



AUTOMATIC FILTER CLEANING SYSTEM

COMPRESSED AIR INLET



Filter Surface

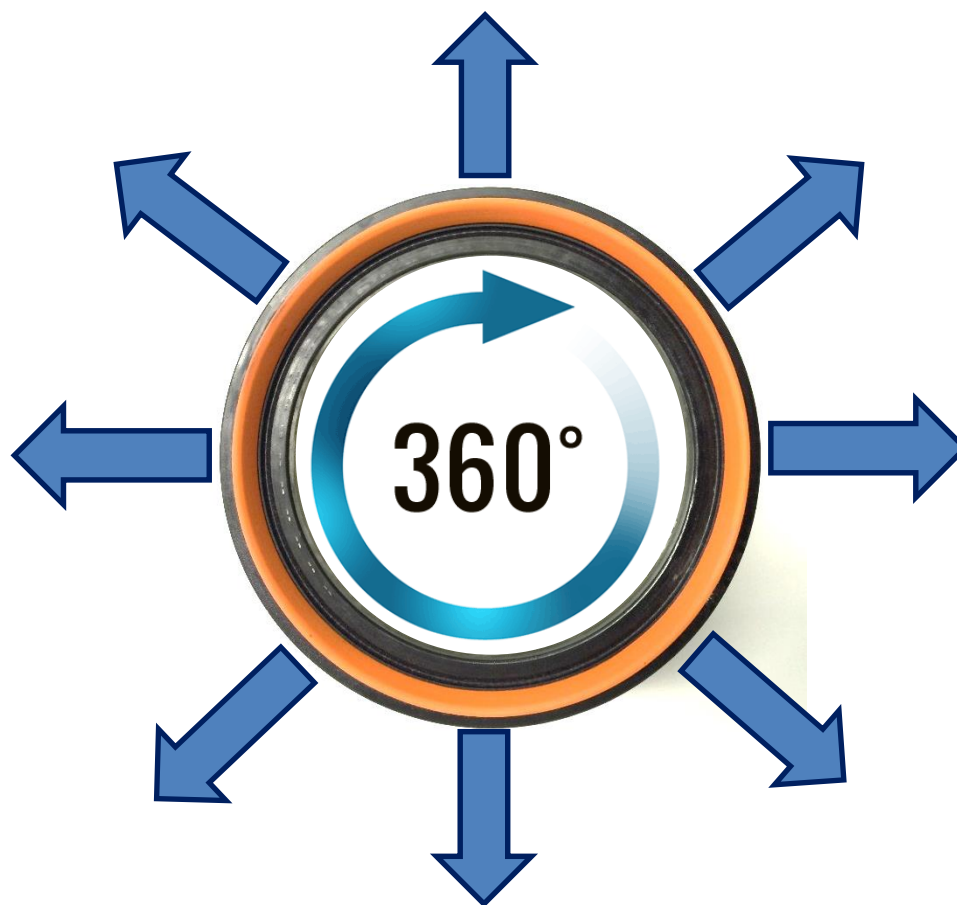
Air Jet System

Compressed Air Cone

AIR JET SYSTEM

AUTOMATIC FILTER CLEANING SYSTEM

The Air Jet Cleaning System uses compressed air for clean all the filter surface.



ADVANTAGES OF AUTOMATIC FILTER CLEANING

Thanks to the Air Jet Cleaning System, the advantages will be:

- Ordinary maintenance free unit
- Work always with the best performance
- High efficient filter cleaning operation
- Long filter lifetime
- No overheating risk



KR2A APPLICATION

RUPES KR2A with new improvements is able to work in heavy duty application like:



Car body shop



Wood industry



Industrial Application



RUPES KR2A HAS NOT APPLICATION LIMITS

NO LIMITS

ACCESSORIES





SWING ARM

Flexible hose can be installed on the swing arm to support the user during sanding operation.

The arm supports hose weight and prevent it to remain on the floor. A second swing arm can be installed to support 2 tools or **2 users** at the same time. (second arm optional)

PERFORATED BOARD

A wide perforated board to place hooks, shelves and tools. **Multiple holes** on the frame allow the possibility to **personalize** positions of all required tools and accessories. Board is ready for fixing swing arms to support hoses and tools.

Dimensions:

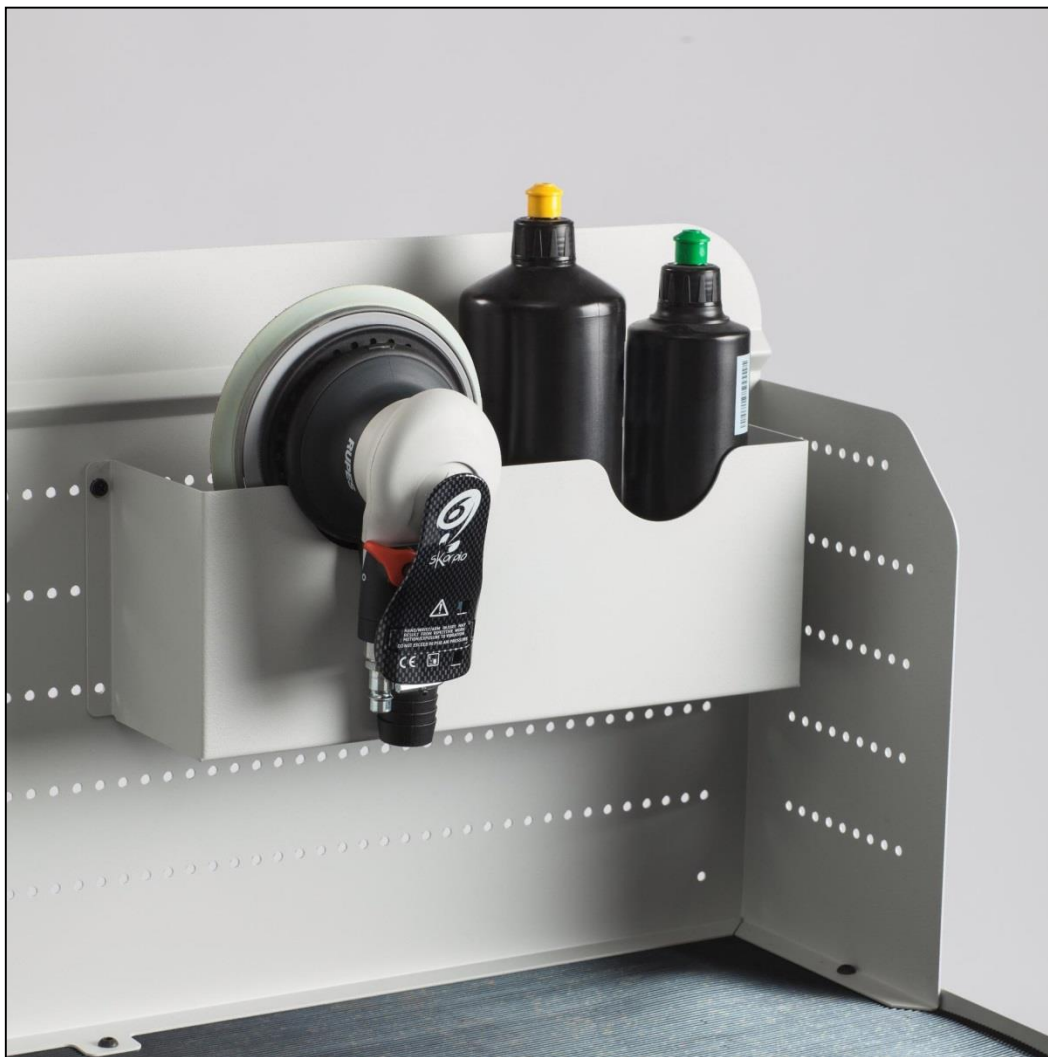
90x47x40 [cm] (l x p x h)

HOOKS SET

A standard **10 pieces set** of hooks is included inside the unit to allow the possibility to install all consumable and necessary tools on the unit perforated board.



STORAGE BAY



A storage bay with integrated tools holder to be fixed on the perforated board.

Polishes and similar consumable are immediately available on the worktable and for daily use.

Dimensions:

35x10x13 [cm] (l x p x h)



KR2A - BACK

The back side is not only used for support hoses and cables but it can be integrated with all KR2A accessories to **increase the available space.**

HOSE AND CABLE HOLDER

A metal holder fixed on the back of the unit is used to support electric cables, pneumatic pipes and flexible hoses that are not fixed on the swing arm.





REEL HOLDER

Paper or other consumable reels can be placed on KR2A unit for daily use and operations.

FILTER REGULATOR

A **compressed air filter regulator** is included inside the unit.

Compressed air can be set at correct pressure values to supply pneumatic sanders or other pneumatic tools and to feed the automatic filter cleaning system.



Y CONNECTION FOR 2 HOSES

Y connection included to support **2 flexible hoses** at the same time.
KR2A is a 2 users working station.



WORKTABLE

KR2A cover is a real worktable.
A functional ribbed rubber surface is placed on the cover for ordinary use and maintenance of sanders and other tools.

Dimensions:

90x47 [cm]



STORAGE CABINET

A **plastic lock** fixed on a transparent door allow the possibility to get access to a wide storage cabinet.

Space and shelves are available to include all parts and tools inside the unit.

Everything is ready to be used and taken directly from KR2A unit.

Dimensions:

41x47x38 [cm] (l x p x h)





DRAWER

A plastic drawer is placed on the unit to collect accessories and useful parts. A **sliding system** makes the extraction of the drawer fast and simple.

Drawer dimensions:

44x35x17 [cm] (l x p x h)

PLASTIC HANDLE

Two strong plastic handles are fixed on the units to provide the possibility of moving the unit in every direction.



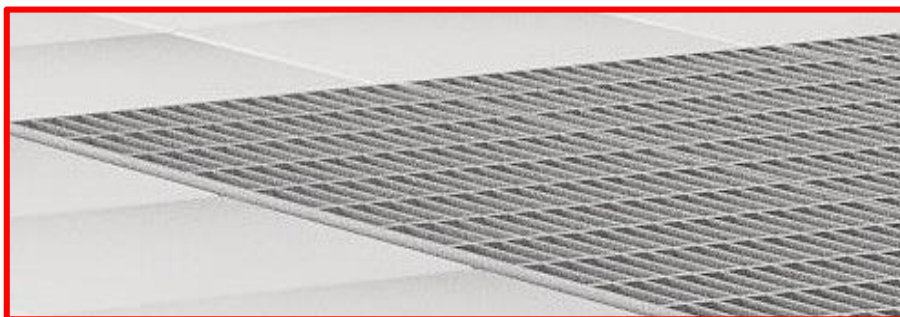


CASTOR WHEEL WITH BRAKE

The unit is equipped with 4 castor wheels (2 with brake).

Thanks to castor wheels the placement and movement of the unit is very simple and easy.

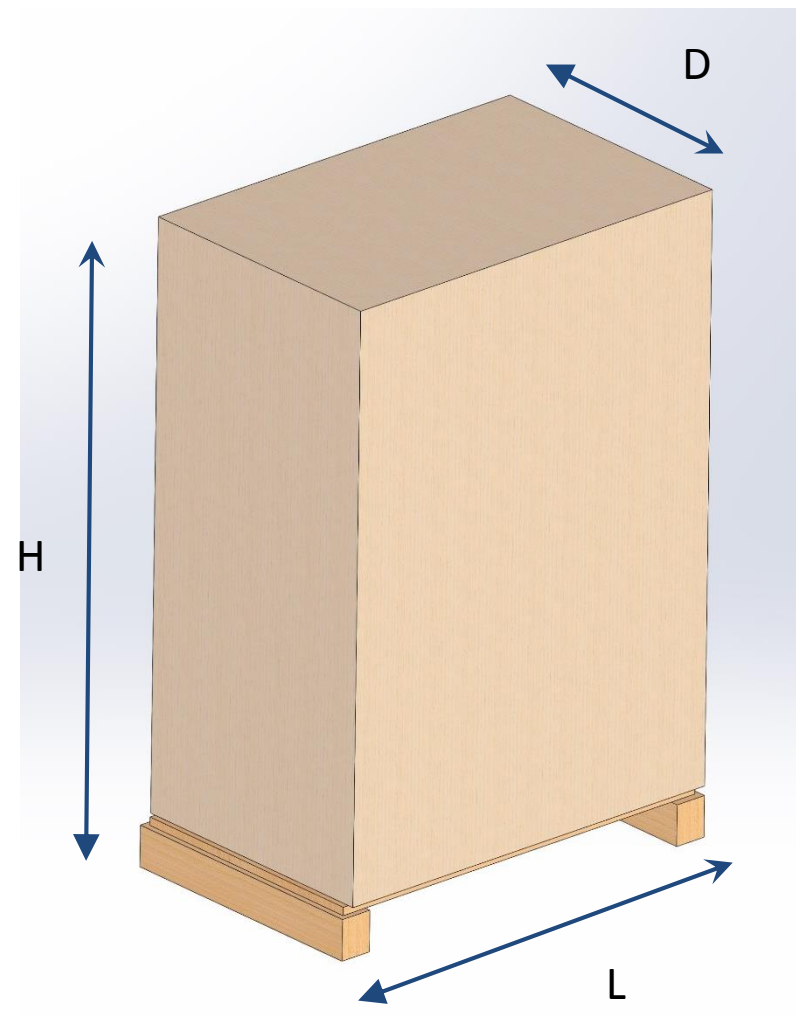
Increased wheel diameter to easily move the unit also **on metal gratings**.



PACKAGE DIMENSIONS

Packaged on a wood pallet with a strong carton cover to protect the unit and included accessories during the shipment.

L [cm]	D [cm]	H [cm]	Weight [kg]
103	67	155	130



WHAT IN THE BOX

9GAT02001/AS

Electric
antistatichose
5 [m] – 29 [mm]
diameter



054.1613/C

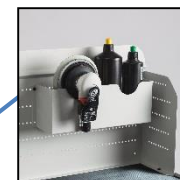
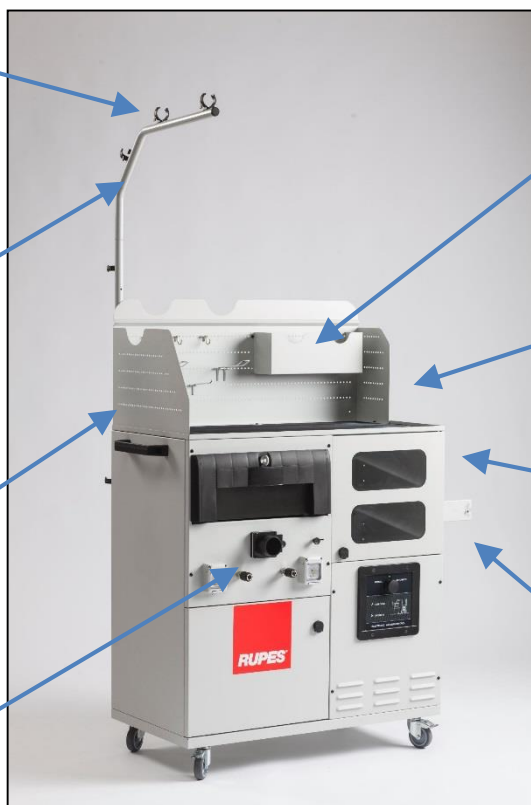
Swing arm



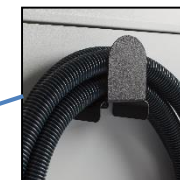
021.1613/C
Perforated board
with hooks set



67.092/C
Y connection



023.1613/C
Storage bay



038.1306
Hose/Cable
support



9GP01002
Filter regulator



036.1613/C
Reel holder

To answer multiple requests from the market...

.....**RUPES** KR2A will be soon available soon in 3 versions:

- 1) KR2A/230 **single phase version (230V)**
Standard version for creating a complete mobile workstation, easy to install and with turbine performance and reliability

- 2) KR2A/400 **three-phases version (400V)**
Lower consumption and higher efficiency with three-phases power supply

- 3) KR2A/ATEX **Atex version (400V)**
Lower consumption and higher efficiency in 22 ATEX zones and with potentially explosive dusts

RUPES[®]

**THANK
YOU**